

D Marin

# Greece



GOUVIA



ZEA



LEFKAS

ENRICH YOUR  
YACHTING  
*experience*



**GOUVIA**

**ZE A**

**LEFKAS**



# Gouvia

**Located on the spectacular island of Corfu, a UNESCO World Heritage Site, this luxury marina links the Adriatic and the Mediterranean.**

D-Marin Gouvia is nestled on Corfu's Gouvia Bay, eight nautical miles west of the Albania-Greece border and 75

nautical miles east of Italy's southeastern Puglia. The closest international airports is Corfu (7 km southeast).



## Things To Do & Facilities

Discover a world of luxury amenities within the 3,500 sqm building facilities, offering a wide range of services including shops, restaurants, bars and cafes, and even a supermarket. Step outside and stretch your legs on the expansive quayside, complete with a playground for the kids, a refreshing swimming pool, recreational croquet courts, and even an international cricket field for sports enthusiasts.



### MUST-SEE

Embark on a journey through history as you wander through the maze of narrow cantons and romantic alleyways that connect the Old Fortress with the New Fortress in Corfu. These magnificent fortresses, adorned with two iconic Venetian lions, stand as a proud testament to the island's rich Venetian heritage.

Visit the picturesque village of Palaioakstritsa, steeped in legend and thought to be the ancient home of the Phoenicians. Explore the 13th-century Palaioakstritsa Monastery, where you can witness the timeless tradition of the monks producing handmade olive oil and kumquat liquor.

Then, marvel at the grandeur of the neoclassical Achilleion Palace, built in the 19th century for Austrian Empress Sisi. Admire the colorful Greek columns and statues that grace its exterior, and be awed by the pastel-hued frescoes that adorn its inner ceilings.

## Capacities & Services

### BERTHING

Berthing capacity: 1.198 (up to 60 m)  
The marina can safely host vessels with a draft up to 5.5 m.

### BOATYARD

Dry dock capacity: 500  
Travel lifts: 75 T & 65 T  
Mobile cranes: 60 T & 45 T  
Jib crane: 2 T  
Boat transportation vehicle of 50 T  
Hull pressure washing and cleaning  
Hangar for boat repairs: 20 x 18 x 12 m

### GENERAL SERVICES

24-hour water and electricity supply  
Fuel station  
Wi-Fi access  
Depots  
Outdoor car parking

### TECHNICAL SERVICES

Antifouling & Polishing  
Engine maintenance and repair  
Upholstery  
Refrigeration systems  
Ventilation, bilge control, air conditioning  
Battery control and charging  
General cleaning works  
Diving works

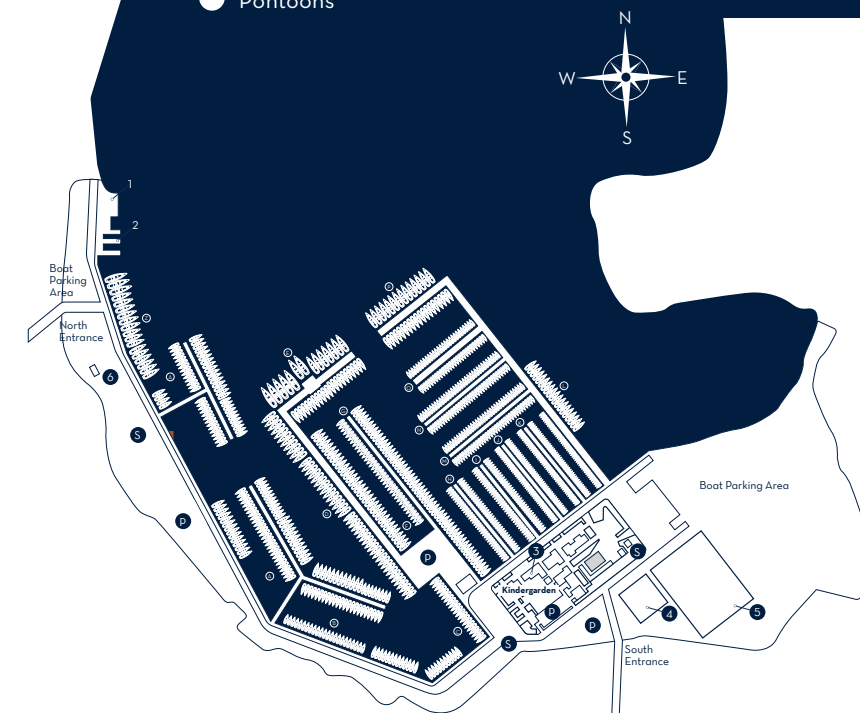
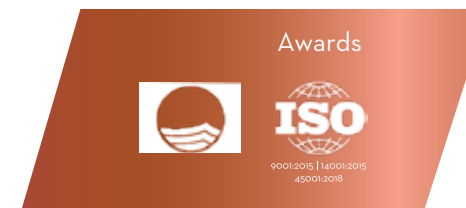
### SECURITY SERVICES

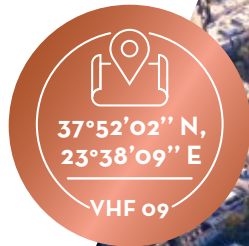
24-hour security with guard and CCTV  
Fire warning and extinguishing system

### ENVIRONMENTAL CLEANING SERVICES

Recycling, used oil, lubricants and hazardous waste disposal areas

- ① Fuel Station
- ② Travel Lift
- ③ Marina Office
- ④ Croquet Field
- ⑤ Cricket Field
- ⑥ Technical Services
- Sanitary
- Parking
- Pontoons





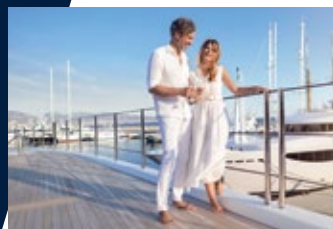
# Zea

***A vibrant megayacht marina near the bustling port of Piraeus, D-Marin Zea is a stellar gateway for exploring the Saronic Gulf and the iconic Cyclades.***

Situated on the northeast side of the Saronic Gulf, D-Marin Zea is just 3 km from the port of Piraeus, the largest port in

the Mediterranean (by passenger numbers and commerce). Athens International Airport is 46 km to the east.





## Things To Do & Facilities

D-Marin Zea is the ultimate destination for an unforgettable day filled with aromatic espresso, delectable culinary creations, signature cocktails, and premium drinks. Shop for all your yacht and boat needs, or simply relax and take in the breathtaking sights of the luxury yachts that surround you. This marina is a favorite among owners and crews for its central location in the heart of cosmopolitan Piraeus, with the sea at its doorstep. Enjoy a day of endless possibilities within walking distance, with shopping centers, cinemas, restaurants, bars, and all essential yacht services at your fingertips.



### MUST-SEE

Piraeus is a city steeped in culture and diversity, with each of its neighborhoods offering a unique perspective on the rich history of Greece.

The hill of Kastella boasts a picturesque panoramic view of Athens and the Saronic Gulf, while the coastal area of Neo Faliro is a hub of activity with the Peace and Friendship Stadium, the Karaiskakis Stadium, and the Veakeio Theatre.

The Municipal Theatre, a grand neoclassical building, is a landmark in the city and a popular meeting place located near the neo-byzantine Piraeus Cathedral.

The Hellenic Maritime Museum, founded in 1949 and located at D-Marin Zea, is also a must-visit for anyone interested in the cultural offerings of Piraeus. The museum showcases Greece's proud maritime history, from antiquity to the 20th century, with exhibits including miniature vessels, naval instruments, and beautiful paintings, maps, and engravings.

Just a stone's throw away from D-Marin Zea is the magnificent Acropolis, a timeless symbol of ancient Greek civilization, where visitors can marvel at the towering temples and grand statues that have stood the test of time.

## Capacities & Services

### BERTHING

Berthing capacity: 520 (up to 150 m)  
The marina can support vessels with a draft up to 8 m.

### GENERAL SERVICES

24-hour water and electricity supply  
Fuel services (via oil trucks)  
WC and showers  
Outdoor car parking  
General cleaning works  
Diving services  
ATM  
Port police  
Chandlery shop  
Sewage pump-out stations  
Diving services  
Diving bottle filling service  
EV charging stations  
Accessibility for the Disabled (WC, Parking & Ramps)  
Wi-Fi access

### TECHNICAL SERVICES

Basic engine, electrical and electronic repairs

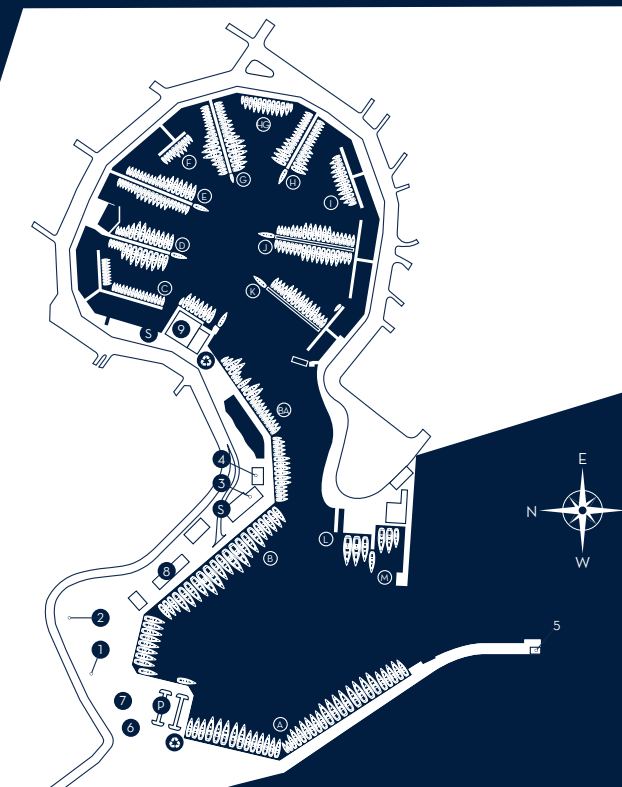
### SECURITY SERVICES

24/7 security, CCTV

### ENVIRONMENTAL CLEANING SERVICES

Recycling, used oil, lubricants and hazardous waste disposal areas

- 1 Entrance
- 2 Naval Museum
- 3 Marina Office
- 4 Port Police
- 5 Fuel Services (via oil trucks)
- 6 Swimming Pool
- 7 ATM
- 8 Yacht Chandler/ NAUTILUS
- 9 Tennis Courts
- S Sanitary
- P Parking
- ⊕ Hazardous Waste/ Recycling Point
- Pontoons



Awards



9001:2015 | 14001:2015



# Lefkas

*A short walk away from Lefkas island's historic centre, this first-class marina is a great base for exploring the coast of western Greece and its dreamy Ionian Islands.*

D-Marin Lefkas is situated on the center of the Ionian Sea's fourth-largest island, Lefkada, right off the west coast of Greece. A bridge

connects the island with the mainland, and the nearest airport, Aktion (17 km northeast).





## Things To Do & Facilities

Immerse yourself in comfort at D-Marin Lefkas, where the 70,000 square meter shore area surrounding the marina is a hub of activity and amenities. The Control Tower serves as the reception office, offering a warm welcome to all guests. For those looking to explore the beautiful surroundings, rental boat, car, and motorbike offices are available, as well as brokerage and port police services. Practical amenities such as laundry and sanitary facilities are also provided, ensuring a comfortable and convenient stay.

Take a stroll through the shopping center, offering a diverse range of shops, restaurants, supermarkets, and cafes, where you can indulge in some retail therapy, savor a delicious meal, or enjoy a refreshing drink while taking in the breathtaking views of Lefkas. The hotel within D-Marin Lefkas provides the ultimate in comfort and style, ensuring a memorable stay.

The high standard of services and facilities is a testament to the commitment of D-Marin Lefkas to providing an unforgettable experience to all guests.



### MUST-SEE

Discover the rich history and stunning beauty of Lefkada Island, with a visit to the historic fort of Agia Mavra. This Venetian castle dates back to 1294, and has been beautifully preserved over the centuries, with additions such as its 15th-century church and the 17th-century lion statue, which is a symbol of Venice.

Take a stroll through the charming town of Lefkada, the island's northeast capital, and immerse yourself in the local culture. Explore the stunning Venetian churches, including the 17th-century Christou Pandokratora, and learn about the island's classical history at the Archeological Museum.

For a breathtaking experience, head to Porto Katsiki, a stunning half-moon shaped beach that can be reached by 80 cliff-entrenched steps. This hidden gem is located on the southwest coast of the island and is easily accessible by yacht.

Lefkada Island is also home to a number of charming mountain villages, including Karya, Exanthia, Athani, and many more. Take a scenic drive through the lush landscapes and explore these charming villages for a truly unique and authentic experience.

## Capacities & Services

### BERTHING

Berthing capacity: 620  
Accommodation for vessels up to 45 m length and 3.30 m draft

### BOATYARD

Dry dock capacity: 280  
20,000 sqm dry dock area  
Travel lifts: 150 T & 70 T  
Mobile crane: 60 T  
Hull washing  
Hangar: 25\*8 m

### GENERAL SERVICES

24/7 water and electricity supply  
Fuel station  
WC and shower  
Wi-Fi access  
Outdoor car parking  
Diving services  
Waste and recycle facilities

### TECHNICAL SERVICES

Engine maintenance and repair  
Electric- electronic repairs  
Ventilation, bilge control, air conditioning repairs  
Battery control and charging  
General cleaning works repairs  
Refrigeration systems  
Rigging and sail repairs  
Antifouling & Polishing

### SECURITY SERVICES

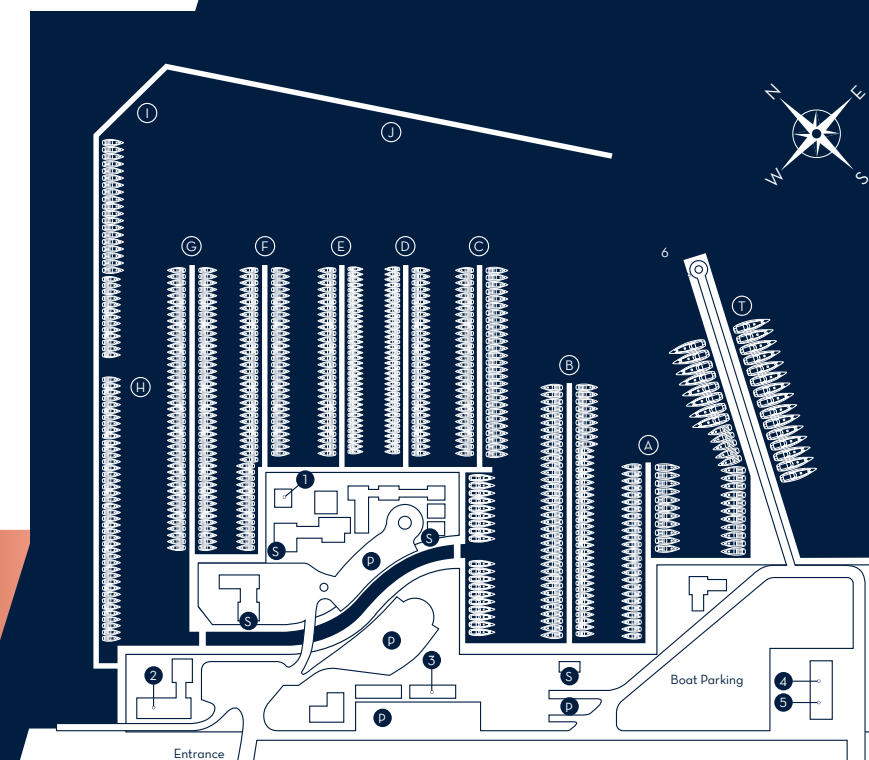
24/7 security service  
Fire warning and extinguishing system

### ENVIRONMENTAL CLEANING SERVICES

Recycling, used oil, lubricants and hazardous waste disposal areas

- 1 Marina Office
- 2 Hotel
- 3 Supermarket
- 4 Repairs
- 5 Travel Lift
- 6 Fuel Station
- S Sanitary
- P Parking
- Pontoons

### Awards







## Happy Berth Days

Discover the most beautiful coastlines of D-Marin World  
with 7 days free berthing and 40% discount up to 4 months.

Turgutreis | Didim | Göcek **TÜRKİYE** • Borik | Dalmacija | Mandalina | Tribunj **CROATIA**  
 Gouvia | Lefkas | Zea | Pylos **GREECE** • Del Este | Duquesa | Estepona **SPAIN**  
 Punta Faro | Marina Di Varazze | Marina Di Livorno | Marina Di San Lorenzo | Marina Degli Aregai **ITALY**  
 Marina Di Valletta **MALTA** • Vloro Marina **ALBANIA** • Portonovi **MONTENEGRO**  
 Business Bay | Jaddaf Waterfront | Al Seef | Marsa Al Arab **U.A.E.**

*D Marin*